



中科瑞泰（北京）生物科技有限公司  
Tel: 400-699-0631  
[http:// www.real-times.com.cn](http://www.real-times.com.cn)  
E-mail: [real-times@vip.163.com](mailto:real-times@vip.163.com)

Product no RGL2080  
Lhca3 | PSI type III chlorophyll a/b-binding protein

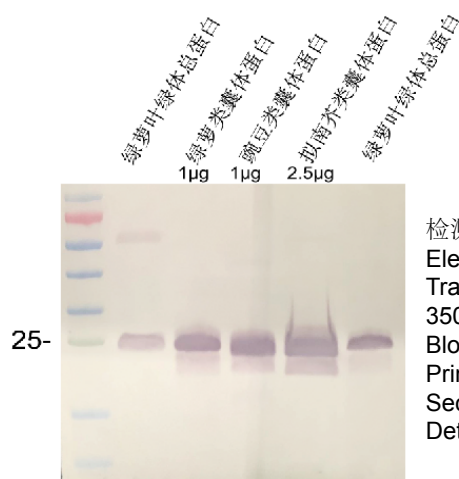
### Product information

Immunogen	BSA-conjugated synthetic peptide derived from the Lhca3 protein sequence from <i>Arabidopsis thaliana</i> UniProt: Q9SY97, TAIR: Atlg61520. This sequence is highly conserved in Lhcb3 proteins from angiosperms (monocots and dicots) and gymnosperms.
Host	Rabbit
Clonality	Polyclonal
Purity	Total IgG
Format	Solution
Quantity	20 $\mu$ l
Storage	Store at $-20^{\circ}$ C; make aliquots to avoid repeated freeze-thaw cycles. Please, remember to spin tubes briefly prior to opening them to avoid any losses that might occur from material adhering to the cap or sides of the tubes.

### Application information

Recommended dilution	1 : 2000-1 : 5000 (WB)
Expected   apparent MW	29   25 kDa for <i>Arabidopsis thaliana</i> (due to a transit peptide being cleaved off)
Confirmed reactivity	<i>Arabidopsis thaliana</i> , <i>Arabis hypogae</i> , <i>Bryopsis corticulans</i> , <i>Citrus reticulata</i> , <i>Hordeum vulgare</i> , <i>Oryza sativa</i> , <i>Pisum sativum</i> , <i>Phaseolus vulgaris</i> , <i>Posidonia oceanica</i> , <i>Spinacia oleracea</i> , <i>Triticum aestivum</i> , <i>Triticale</i> , <i>Zea mays</i>
Predicted reactivity	Dicots, Gymnosperms
Not reactive in	No confirmed exceptions from predicted reactivity are currently known.

### Application Example



检测到条带, 25 kD  
Electrophoresis: 12% RealPAGE SDS Electrophoresis(RTD6148)  
Transfer: 1×RealBlot transfer buffer(RT5020)  
350mA blotting to NC membrane for 30min.  
Blocking: BSA at RT for 1h.  
Primary antibody: Lhca3 1:5000 dilution at RT for 1h  
Secondary antibody: 1:5000 dilution using Goat Anti-Rabbit IgG AP  
Detection: using BCIP/NBT at RT for 5 min